

Test Report

Electrical Test

Report

MP-2022090008-V1.0

customer

**AVDesign Haus
Rothertstraße 8
59555 Lippstadt**

device

**power supply
motor with power supply**

Kompetenzzentrum Fahrzeug Elektronik GmbH

Erwitter Straße 105, 59557 Lippstadt

Tel.: 02941/922 76-0

Fax: 02941/922 76-199

E-Mail: info@kfe-lippstadt.de

Internet: www.kfe-lippstadt.de



Tabel of contents

- 1. DEVICES 3
- 2. TEST OVERVIEW 3
- 2. TEST PROCEDURE..... 4
 - 2.2 Immunity 4
 - 2.2.1 Isolation test 4
 - Test Result: passed 4
 - 2.2.2 leak-current Test..... 6
 - Test Result: passed 6

1. devices

DUT 1

Geräte-Typ	Power supply
Geräte-Nr	
Muster-Nr Kunde	
Muster-Nr KFE	
Musterstand	
HW Stand	
SW Stand	
Fertigungs-Datum	
Anmerkung	

DUT 2

Geräte-Typ	Motor with power supply
Geräte-Nr	
Muster-Nr Kunde	
Muster-Nr KFE	
Musterstand	
HW Stand	
SW Stand	
Fertigungs-Datum	
Anmerkung	

2. Test overview

DUT 1

Tests	Status
Leak current	passed
Isolation test	passed

DUT 2

Tests	Status
Leak current	passed
Isolation test	passed

2. Test procedure

2.2 Immunity

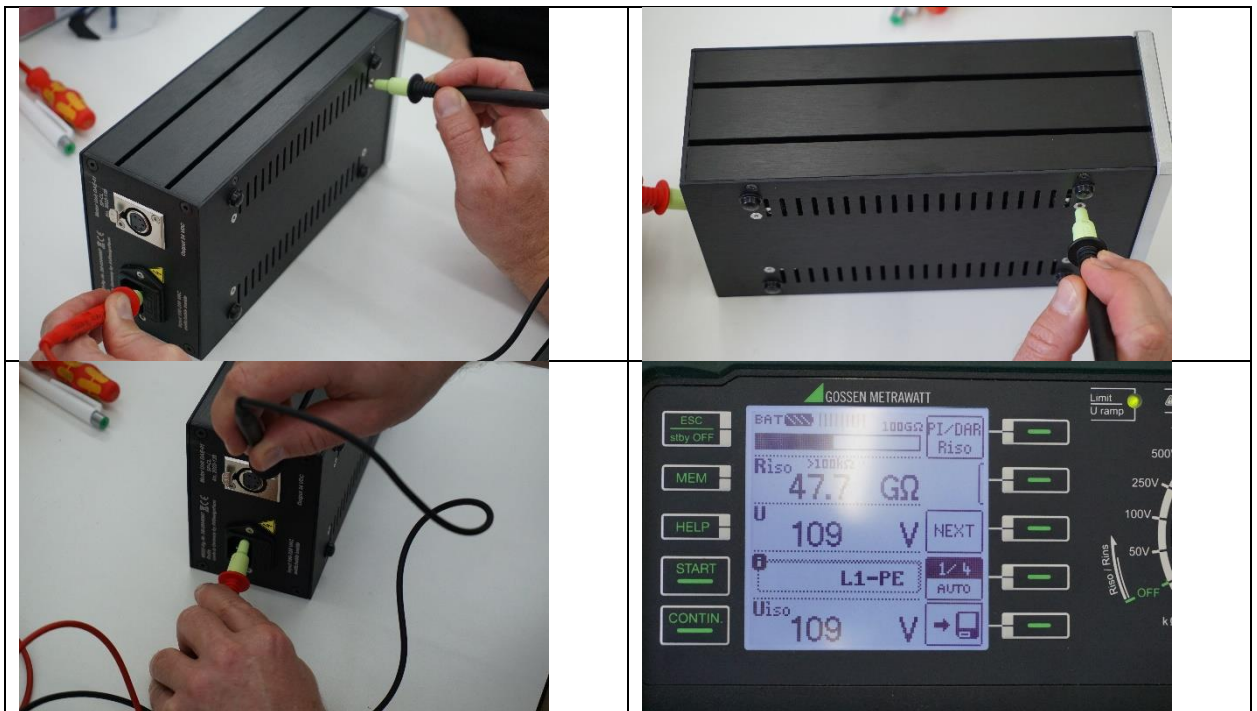
2.2.1 Isolation test

Test Result: **passed**

Overview:

Measured positions: Chassis-L1, Chassis-N, Chassis-PE, Connector-L1, Connector-N, Connector-PE, Frontpanel-L1, Frontpanel-N, Frontpanel-PE.

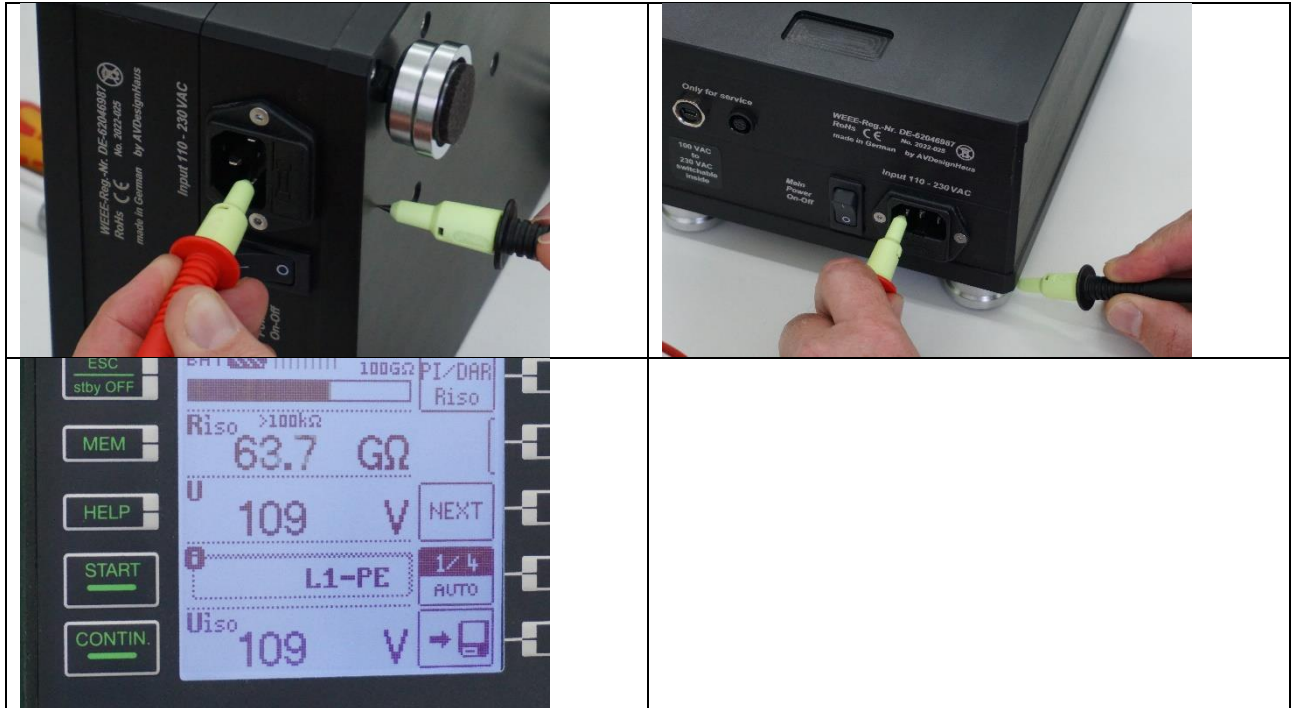
DUT-1



results:

100V	47,7 GΩ
------	---------

DUT-2



results:

100V	63,7 GΩ
------	---------

Messprotokoll MP2022090007-V1.0

2.2.2 leak-current Test

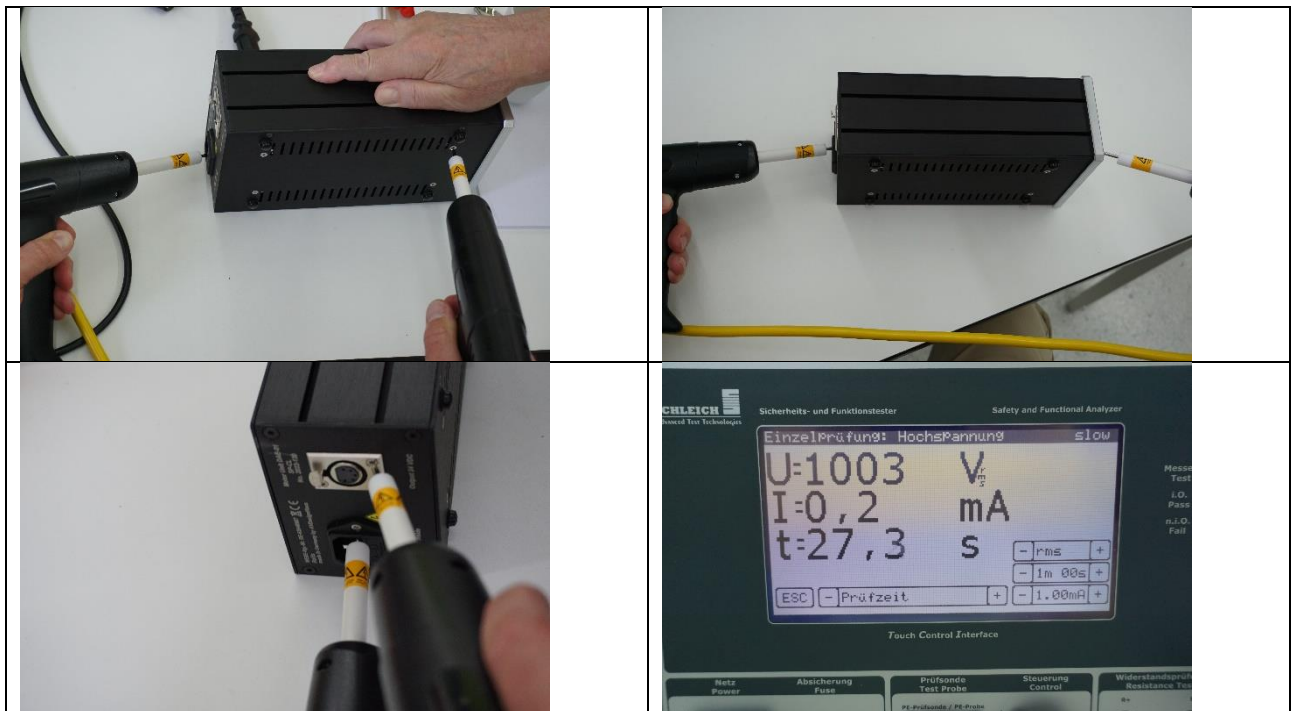
Test Result: **passed**

Parameter:

1000V	60s
-------	-----

Measured positions: Chassis-L1, Chassis-N, Chassis-PE, Connector-L1, Connector-N, Connector-PE, Frontpanel-L1, Frontpanel-N, Frontpanel-PE.

DUT-1



results:

1000V	<0,2mA
-------	--------

DUT-2



results:

1000V	<0,2mA
-------	--------